

Installation Instructions – Premier™ Melt Stick

Premier™ Melt Stick

Application:

Premier™ Melt Stick is a meltable, co-polymer based adhesive used for small superficial damages (scratches) in the polyethylene coating, where the damage does not extend to the bare metal.

Delivery range:

Repair stick 25 x 300 mm
36 pcs. / box



1

Remove any non-adherent factory coating and chamfer sharp edges with a rasp (semi-circular blade)



2

Clean and roughen the surface with a hand wire brush.



3

Warm up the factory coating.



4

Roughen again the warmed factory coating.



5

Preheat the repair stick with a flame until the material is soft. A light ignition of the repair stick is acceptable.



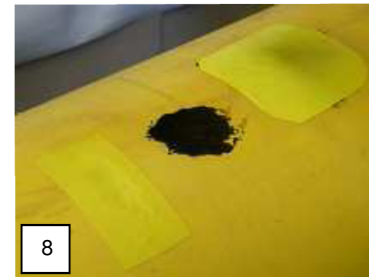
6

Continuously warm the repair stick and the area to be repaired.



7

Smooth the material with a hot spatula.



8

The material of the repair stick must cover and fill out the repair area. The full firmness of the polyethylene stick is only obtained after 2 h minimum.

Attention: Our coating systems are not suitable for the sealing of leakages in media transporting pipelines, but exclusively for the prevention and protection from corrosion.