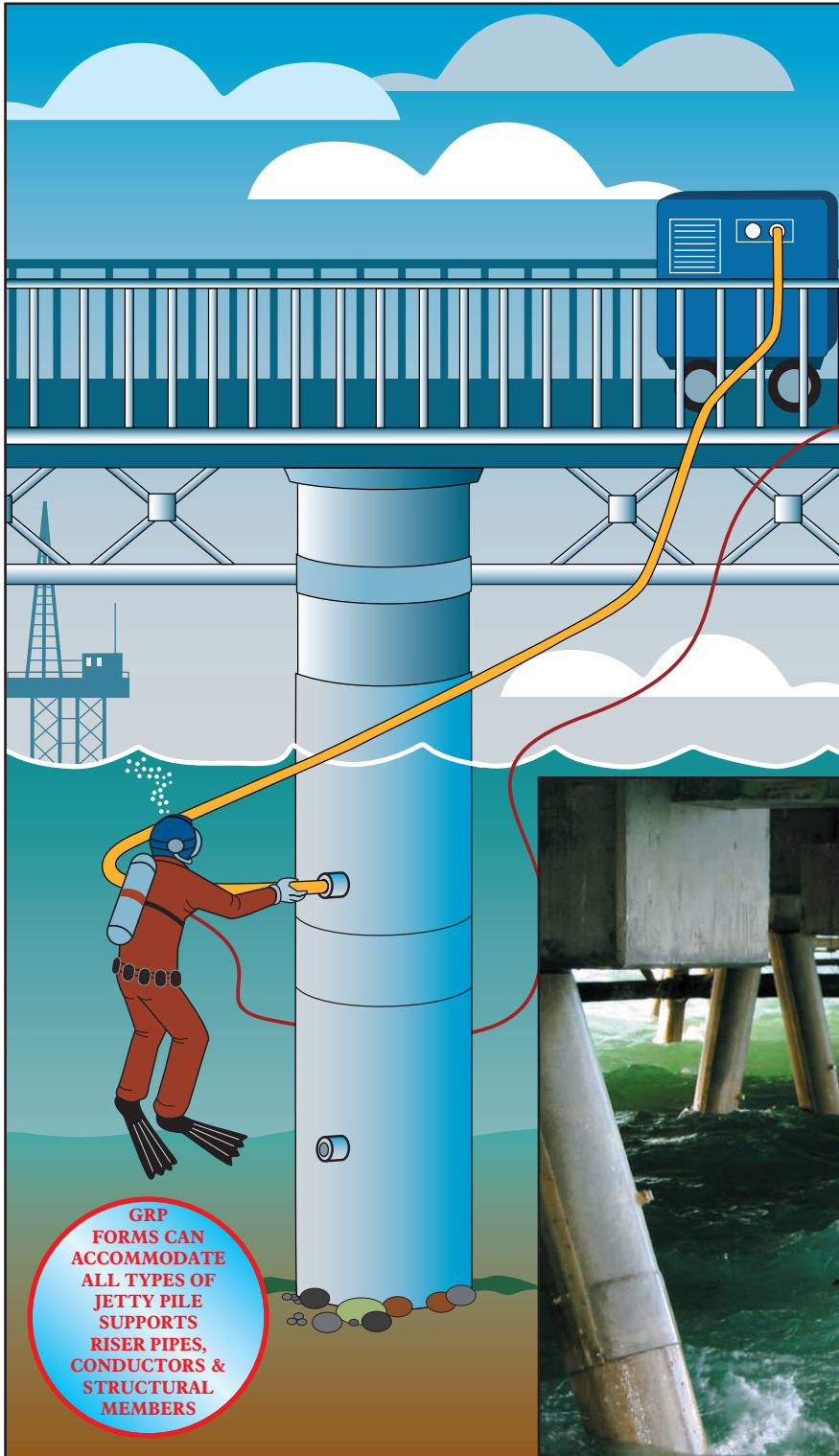




# Series 500 & 500 ST

MARINE SYSTEMS

Extra heavy duty encapsulation system for steel, concrete & timber jetty piles, bridge supports, offshore riser pipes and conductors, utilising a tough GRP Form filled with SeaShield 550 Epoxy Grout



GRP FORMS CAN ACCOMMODATE ALL TYPES OF JETTY PILE SUPPORTS, RISER PIPES, CONDUCTORS & STRUCTURAL MEMBERS

- Total encapsulation
- Easy to install
- Outstanding abrasion resistance
- Surface tolerant 500 ST system for steel substrates
- Only requires inexpensive pumping equipment
- Optimum maintenance free service life
- Translucent GRP Forms enable internal grout level to be easily monitored
- UV resistant
- Meaningful long-term warranties available



Above: A completed SeaShield Series 500 system in service.



LEADERS IN CORROSION PREVENTION  
& SEALING TECHNOLOGY

## Denso SeaShield Series 500 & 500 ST

These two extremely robust, extra heavy duty Denso encapsulation systems have been designed specifically for the repair and/or protection of coastal marine structures such as jetty piles, bridge supports, offshore risers, conductors, pipework, jacket legs and structural member supports.

To overcome the difficulty of working in a tidal or splash zone environment the systems can be applied in a series of easy stages.

### Series 500 - for concrete or timber substrates

Series 500 comprises translucent GRP Forms which are secured around the suitably cleaned substrate of the structure to be protected. Working from the bottom upwards, SeaShield 550 Epoxy Grout is then injected by pump, through special entry ports in the Forms until it completely fills the internal space between the Form and the substrate. When cured, the SeaShield 550 Epoxy Grout bonds exceptionally well to the substrate and the Forms which remain in place as a tough outer layer giving additional impact and abrasion resistance.

### Series 500 ST - for steel substrates (Patent Pending)

Series 500 ST is a novel encapsulation system which incorporates a surface tolerant coating applied to steel surfaces in the immediate splash zone area and below the water line. The proven Denso coating provides totally effective long-term corrosion protection despite the presence of chlorides or wet steel. The GRP Form is fitted over the Denso surface tolerant coating. SeaShield 550 Epoxy Grout is then injected by pump until the Form is completely sealed.

Full application and technical data sheets are available on request.



High pressure water-jetting.

All statements/data presented herein are given in good faith and believed to be appropriate and reliable. However, it is given without express or implied warranty or guarantee. Potential users of our materials are urged to conduct confirmatory trials to satisfy themselves as to the suitability of the selected product for their particular end use, prior to purchase.



Approved Quality Management System  
AS/NZS ISO 9001:2000  
Loyds Register - Certificate No. MEL 0927759



Denso (Australia) Pty Ltd



411-413 Victoria Street, Brunswick Vic 3056, Australia

MELBOURNE ● SYDNEY ● ADELAIDE ● BRISBANE ● PERTH

Tel: +61 3 93567600 or 1300 658 590 (toll free) ● Email: [denso@densoaustralia.com.au](mailto:denso@densoaustralia.com.au) ● Web: [www.densoaustralia.com.au](http://www.densoaustralia.com.au)

Denso (New Zealand) Ltd Tel: +64 21 304 660 ● Email: [info@denso.co.nz](mailto:info@denso.co.nz)

### System Components

#### SeaShield Series 500 - for concrete & timber

##### GRP Forms:

High quality translucent Glassfibre Reinforced Plastic (GRP).

##### Form Stand-offs:

Spacers are used inside the Form to maintain proper spacing around the substrate when pumping or pouring the 550 Epoxy Grout.

##### SeaShield 550 Epoxy Grout:

A three component water displacing epoxy resin/aggregate formulation with excellent flowability for easy application.

#### SeaShield Series 500 ST - for steel

As above but including an inner Denso surface tolerant coating system.

##### For complete application

##### specifications or assistance contact:

Denso Australia (Pty) Ltd (see below).

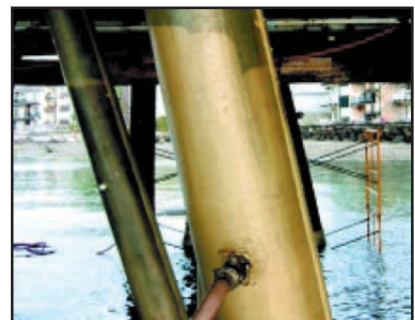
Please include your fax / email number for immediate response.



Mixing the 550 Epoxy Grout.



Pouring the Grout into the pump hopper.



Pumping the Grout into the GRP Form.  
(note the visible rising grout level seen through the Form).