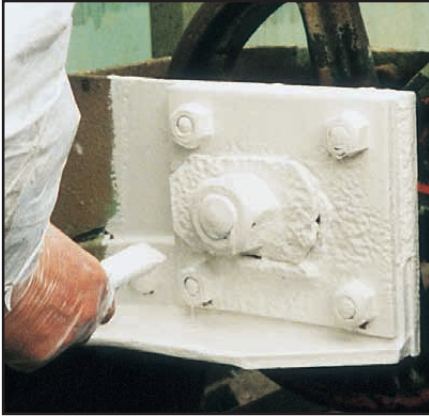


STEELCOAT 700 SYSTEM

FOR STRUCTURES - EXPOSED PIPES - STRUCTURAL STEELWORK
(MAXIMUM OPERATING TEMPERATURE 55°C)

500 MICRONS THICK, MINIMUM TWO COAT BRUSH OR SPRAY
APPLIED EPOXY MASTIC COATING SUITABLE FOR POWER TOOL
CLEANED SURFACES

✓ **MINIMUM SURFACE PREPARATION : POWER TOOL CLEANING** (see detailed surface preparation data sheet)



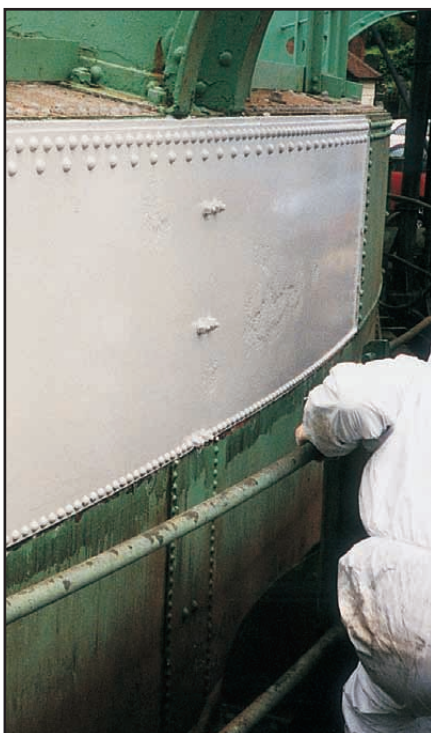
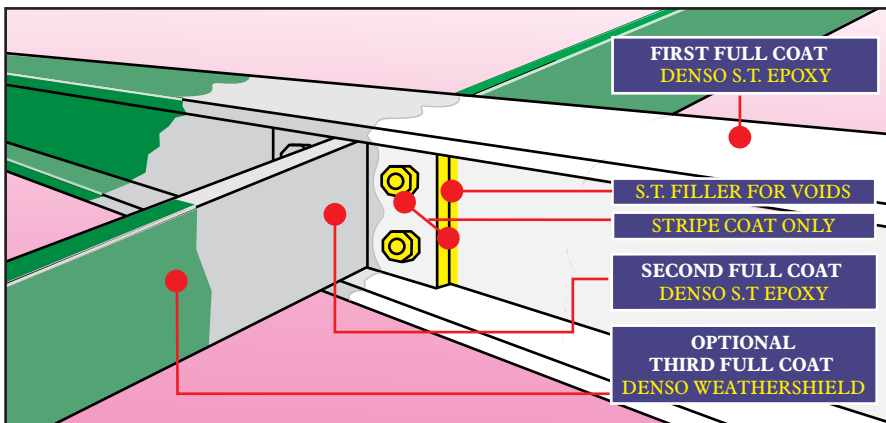
First coat of Denso S.T. Epoxy brush applied over pitted steel surface. Before application of the Stripe Coat to all edges and bolts, Denso S.T. Filler is applied to seal all bad pits and voids.

Unrivalled Surface-Tolerant Coatings for long-term cost effective protection

Denso Steelcoat 700 System comprises a two component glass flake reinforced epoxy mastic coating (Denso S.T. Epoxy). A minimum of two coats is easily applied by brush or airless spray. Denso S.T. Filler is utilised to fill any voids, gaps or bad pits. Denso Stripe Coat ensures high build over edges and bolts. When exposed to ultra-violet light a third coat of Urethane based material (Denso Weathershield) is applied for extra protection (prevents chalking). Light colours of Denso S.T. Epoxy are recommended to ensure the epoxy is fully covered with the final Weathershield topcoat.

Additional Benefits

- Can also be applied to water jet or dry abrasive blast cleaned surfaces
- Environmentally responsible (low VOC)
- Fast drying and application time reduces costs
- Deep penetrating properties
- Outstanding adhesion and durability
- Choice of colours to blend in with site requirements



Left: Fast, spray application.

Below: Steelcoat 700 System protecting a pipebridge.



Steelcoat 700 System Components:

Denso S.T. Epoxy
Denso S. T. Stripe Coat

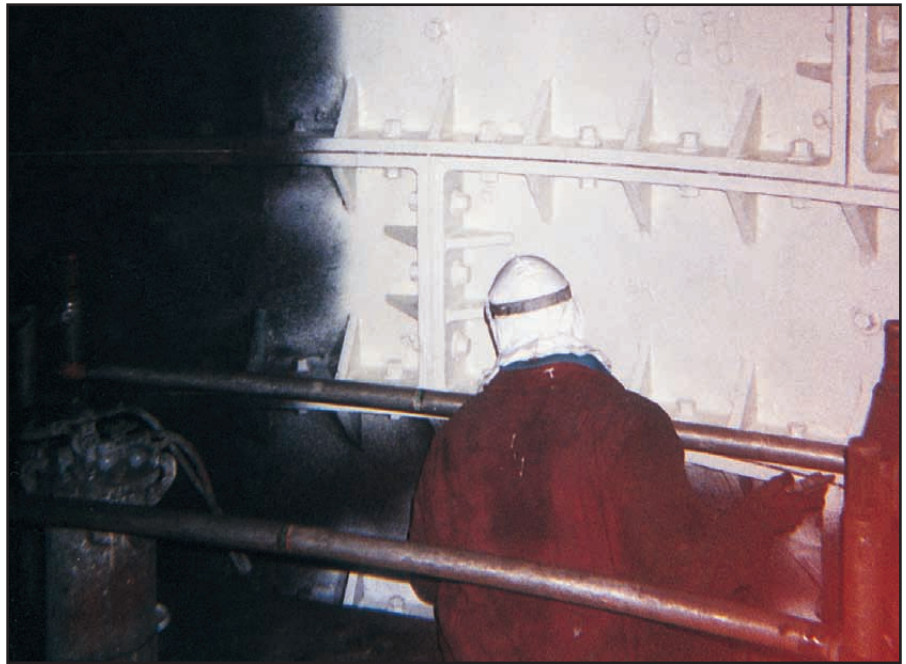
Optional Components:

Denso S.T. Filler
Denso Weathershield

Technical data sheets are provided on request for each of the above components.

Coats of Denso S.T. Epoxy are applied in contrasting colours to ensure complete coverage and minimum thickness of the system.

The first coat (white) is being spray applied to these bolted cast iron segments.



Denso Weathershield - Standard Colour Range



Green
14 C 39



Yellow
08 E 51



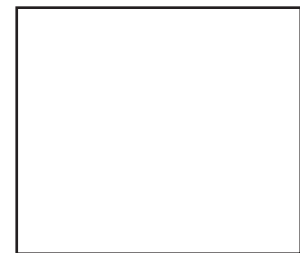
Black



Mid Grey
18 B 21



Blue
20 E 51



White

Other colours are available on request.

All statements/data presented herein are given in good faith and believed to be appropriate and reliable. However, it is given without express or implied warranty or guarantee. Potential users of our materials are urged to conduct confirmatory trials to satisfy themselves as to the suitability of the selected product for their particular end use, prior to purchase.



Approved Quality Management System
AS/NZS ISO 9001:2000
Lloyd's Register - Certificate No. MEL 0927759



Denso (Australia) Pty Ltd



411-413 Victoria Street, Brunswick Vic 3056, Australia

MELBOURNE ● SYDNEY ● ADELAIDE ● BRISBANE ● PERTH

Tel: +61 3 93567600 or 1300 658 590 (toll free) ● Email: denso@densoaustralia.com.au ● Web: www.densoaustralia.com.au

Denso (New Zealand) Ltd Tel: +64 21 304 660 ● Email: info@denso.co.nz